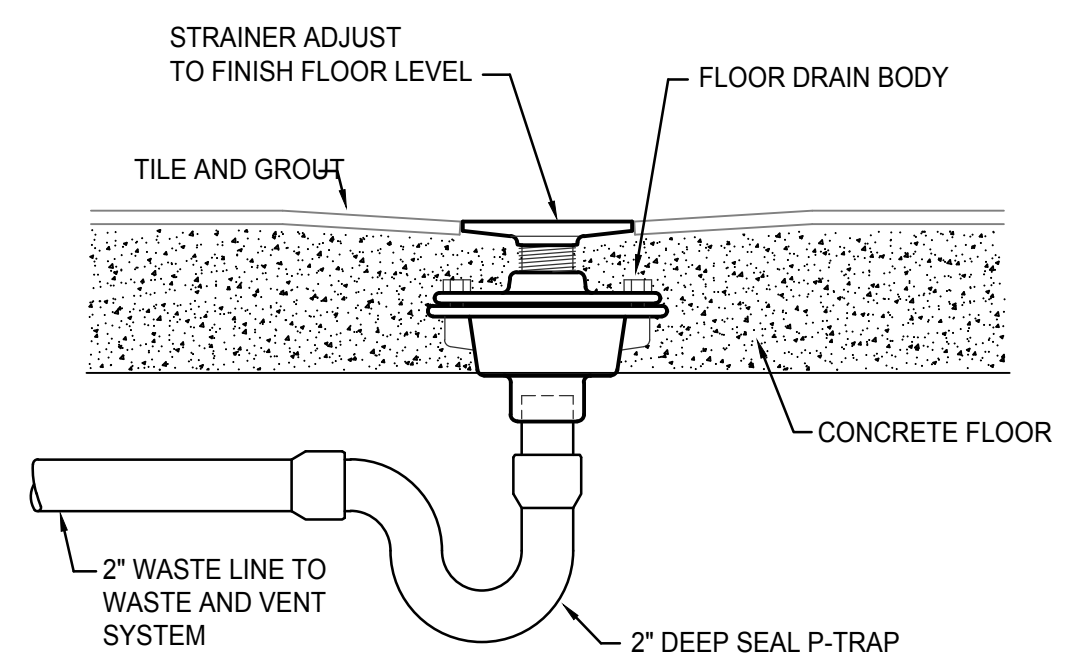
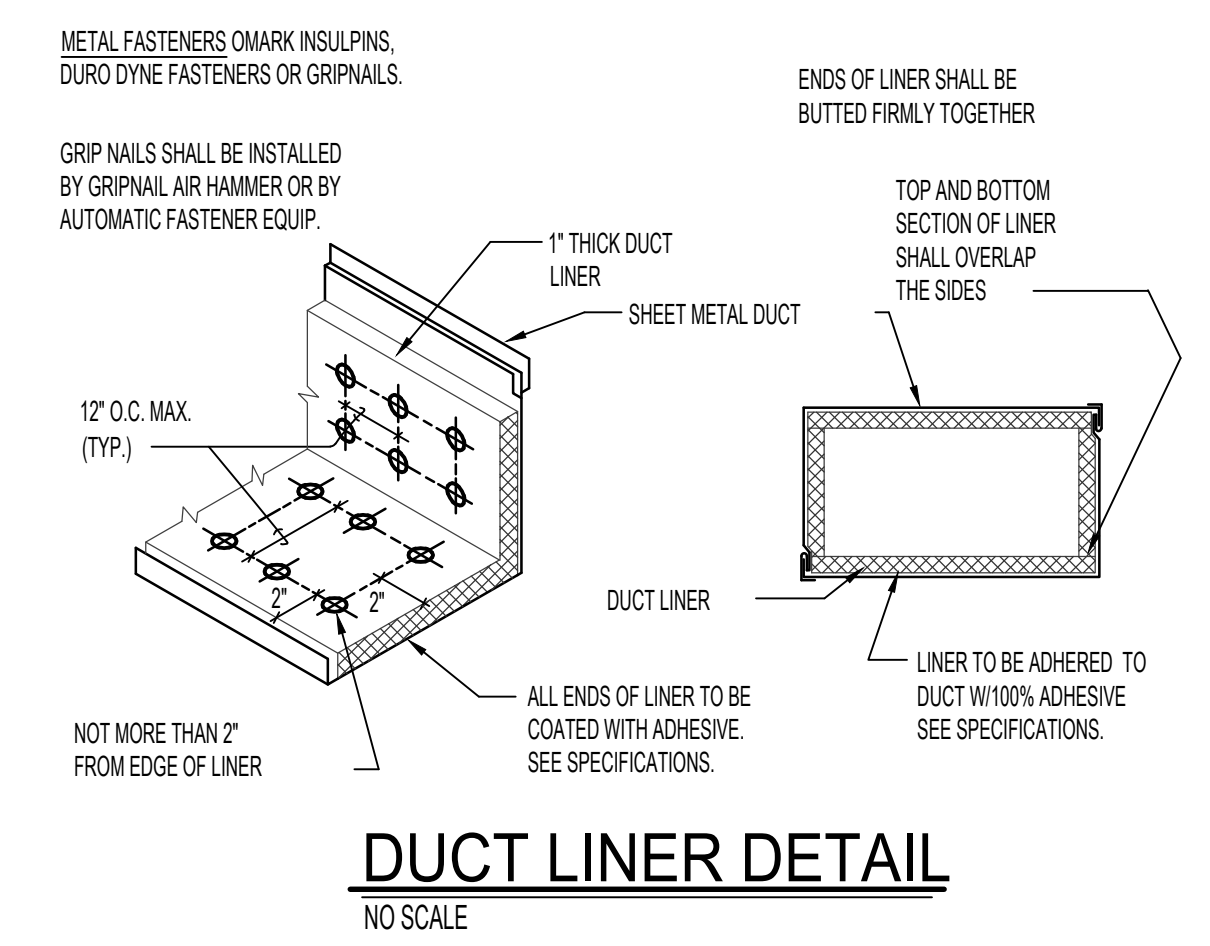
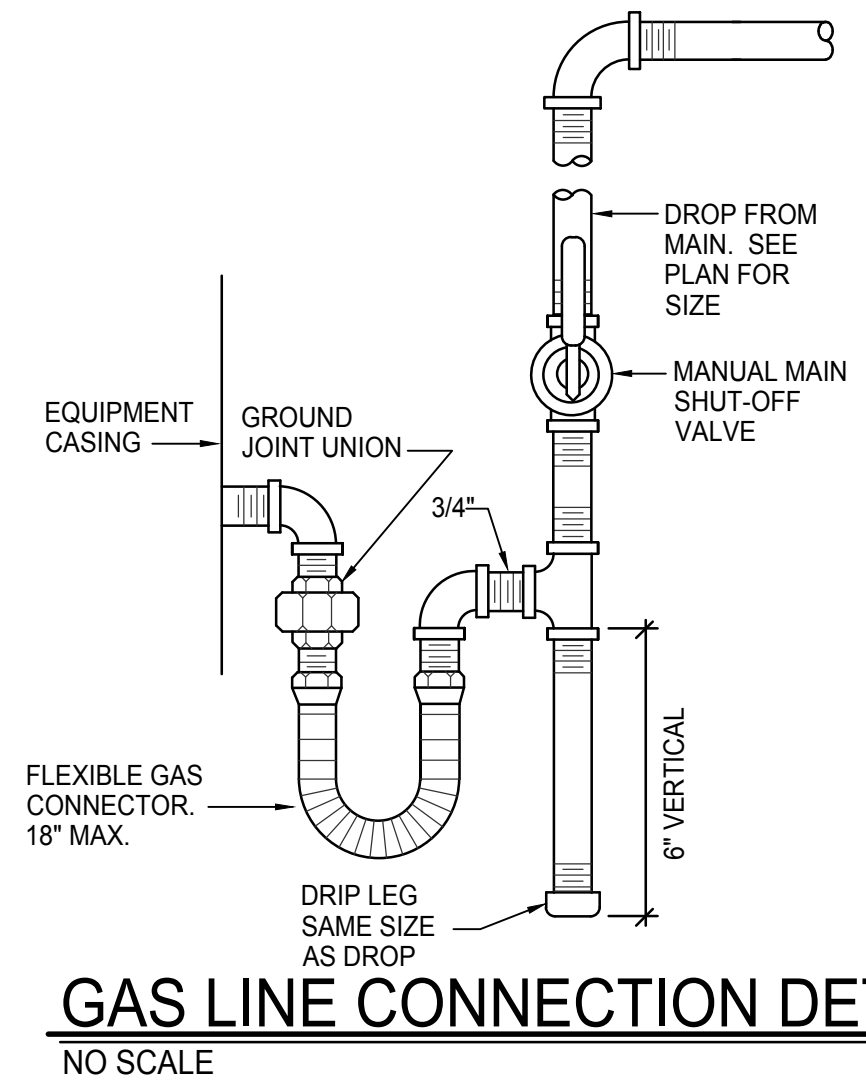


FULLY ENCLOSED INDOOR PACKAGED UNIT																			
SYM.	CFM	OUTSIDE AIR REQUIRED	SP _i	BLOWER H.P.	CHAR.	MCOOP	MCA	WEIGHT	GAS CONN.	GAS HEATING (1 STAGE)			COOLING			DUCT SIZE		REMARKS	
										BTU IN	BTU OUT	EAT	LAT	MBH	EAT	LAT	SUPPLY		RETURN
PU 1	1,000	125	1.5"	1/3	240/60/1	.5	21.8	350 LB	3/4"	60,000	41,000	65°F	98°F	34.2	99°F	58°F	14x14"	14x14"	MAGIC-PAK M-SERIES MODEL 60MGE4-11-361"P. EER 11. WITH OPTIONAL FACTORY IMPACT RATED LOUVER & INSECT SCREEN.
PU 2	1,000	125	1.5"	1/3	240/60/1	.5	21.8	350 LB	3/4"	60,000	41,000	65°F	98°F	34.2	99°F	58°F	14x14"	14x14"	MAGIC-PAK M-SERIES MODEL 60MGE4-11-361"P. EER 11. WITH OPTIONAL FACTORY IMPACT RATED LOUVER & INSECT SCREEN.

FIXTURE SCHEDULE					
SYM.	DESCRIPTION	HOT	COLD	WASTE	VENT
FD-1	2" FLOOR DRAIN - ZURN Z-415 WITH 5"Ø NICKEL-BRONZE STRAINER AND 2" DEEP SEAL P-TRAP.	--	--	2"	2"
FD-2	2" FLOOR DRAIN STRAINER - 5"Ø NICKEL-BRONZE STRAINER	--	--	2"	2"
L-1	COUNTERTOP LAVATORY - KOHLER MODEL K-2905-1-0 SELF-RIMMING "FARMINGTON" WITH MOEN L4600 LEVER HANDLE FAUCET, K-7715 OPEN GRID STRAINER, 1/2" BALL STOPS AND 1-1/4" P-TRAP.	1/2"	1/2"	1-1/2"	1-1/2"
S-1	TWO COMPARTMENT SINK - ELKAY MODEL LK-3322 WITH 20 GA TYPE 304 STAINLESS STEEL CONSTRUCTION, 1-HOLE FAUCET DRILLINGS, ELKAY LK1000CR FAUCET, LK-99 STRAINER, 1-1/2" P-TRAP AND 1/2" BALL TYPE STOP VALVES.	1/2"	1/2"	1-1/2"	1-1/2"
U-1	ADA WALL MOUNTED URINAL - KOHLER K-4989-T "FRESHMAN" WITH WALL CARRIER & SLOAN OPTIMA BATTERY OPERATED FLUSH VALVE. MOUNT AT ADA HEIGHT.	--	3/4"	2"	2"
WH-1	UNDER COUNTER ELECTRIC INSTANTANEOUS WATER HEATER - EEMAX MODEL SP35 WITH 3.5 KW HEATING ELEMENT (15 AMPS) AND 1/2" WATER LINE CONNECTIONS. (240 VOLT - 1 PHASE)	1/2"	1/2"	--	--
WC-1	ADA TANK TYPE WATER CLOSET - KOHLER K-3999 "HIGHLINE" W/ ELONGATED BOWL, K-4670-C WHITE OPEN FRONT SEAT, BOLT CAPS AND 1/2" STOP VALVE. LEFT OR RIGHT HANDLE FLUSH LEVER SO LEVER IS ON OPEN SIDE OF ACCESSIBLE STALLS.	--	1/2"	4"	2"
WC-2	TANK TYPE WATER CLOSET - KOHLER K-3675 "WELL WORTH" W/ ELONGATED BOWL, K-4670-C WHITE OPEN FRONT SEAT, BOLT CAPS AND 1/2" STOP VALVE. LEFT OR RIGHT HANDLE FLUSH LEVER SO LEVER IS ON OPEN SIDE OF ACCESSIBLE STALLS.	--	1/2"	4"	2"

EXHAUST FAN SCHEDULE									
SYM.	TYPE	C.F.M.	S.P.E.	WATTS	CHAR.	R.P.M.	CONTROL	REMARKS	
EF 1	CEILING MOUNTED	150	.25	127	120/60/1	760	SEE ELEC.	TWIN CITY MODEL T150 WITH BACKDRAFT DAMPER. 8"Ø EXHAUST DUCT TO EXISTING ROOF CAP.	



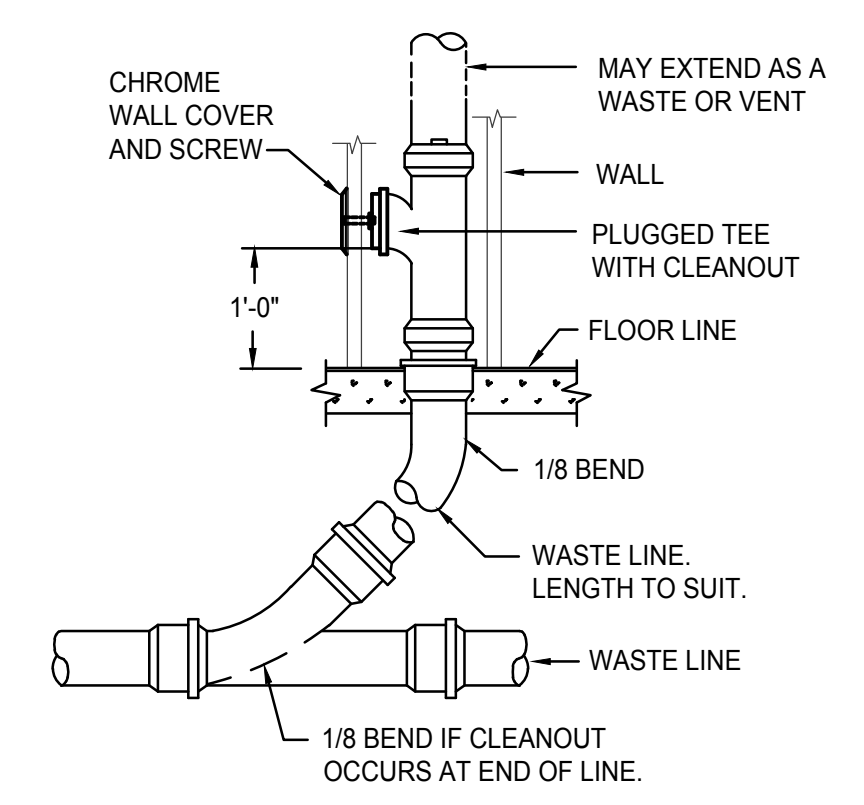
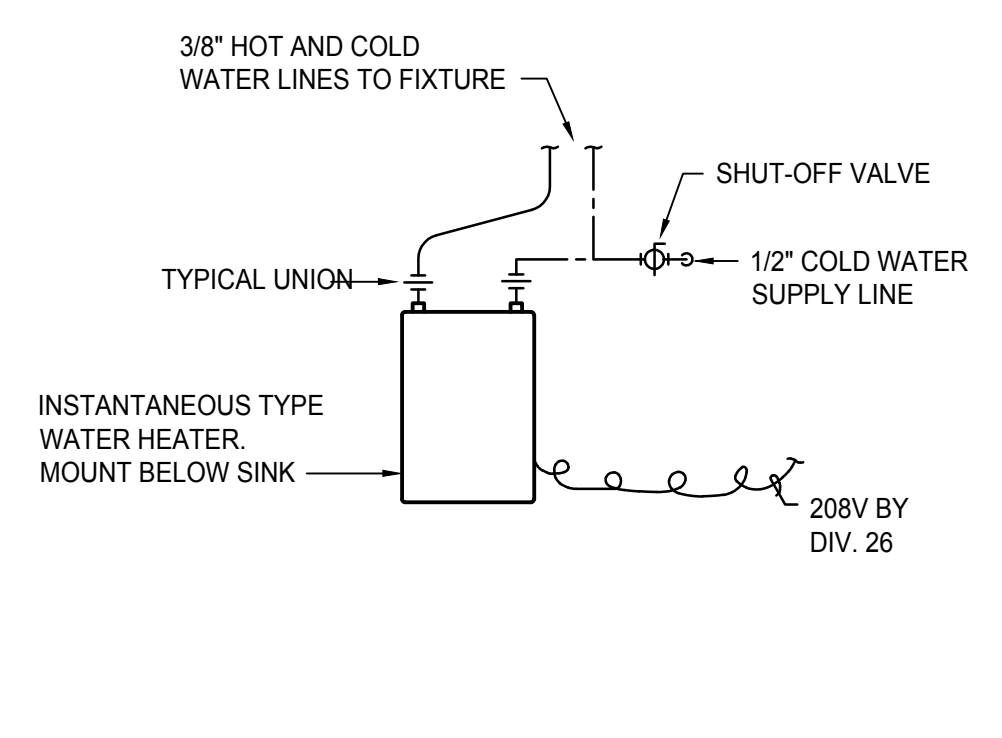
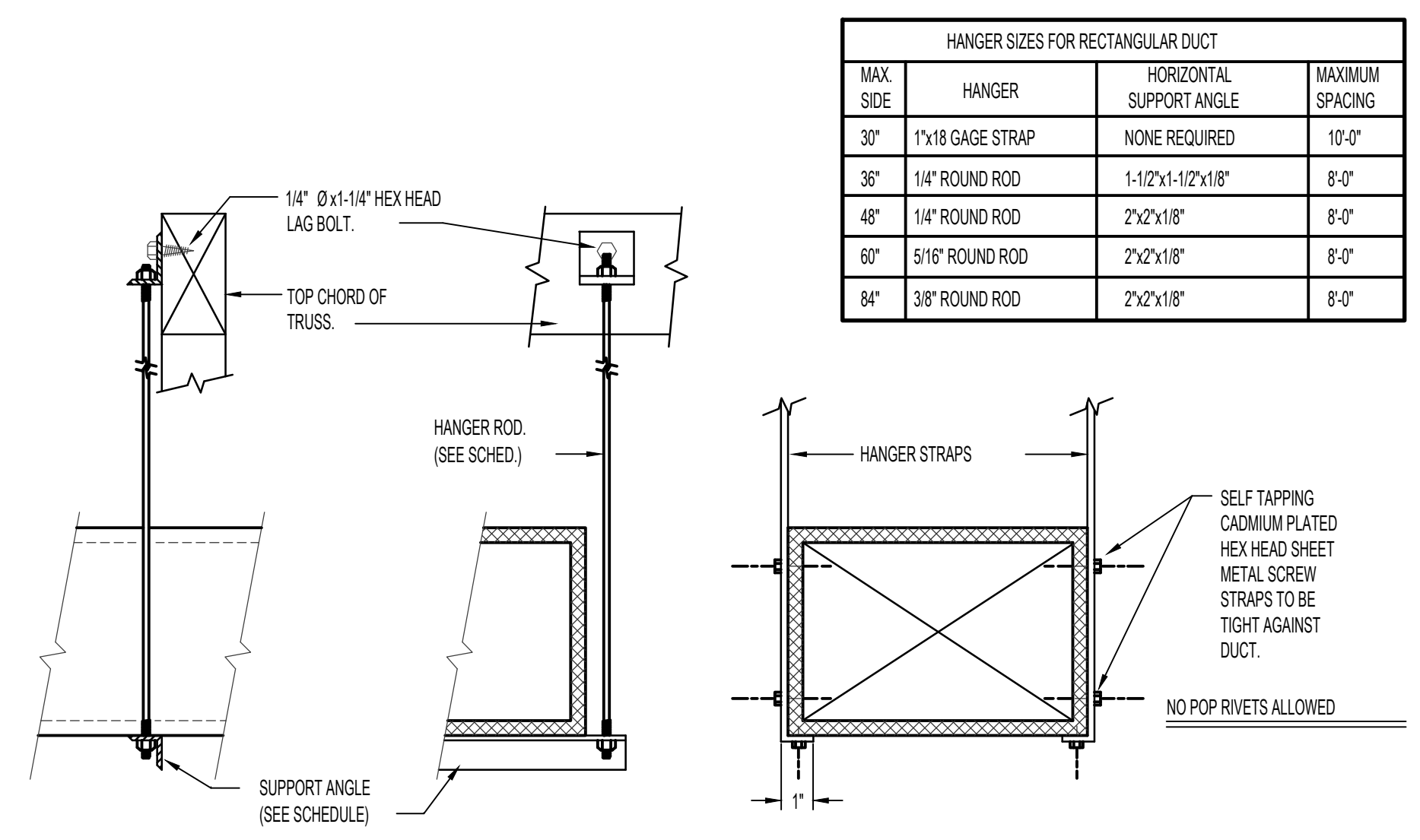
DIMENSION OF LONGEST SIDE, INCHES	SHEET METAL GAUGE (ALL FOUR SIDES)	TRANSVERSE REINFORCING (1)					
		AT JOINTS					
		MIN. H. IN.	DRIVE SLIP	HEMIED S SLIP	ALTERNATE BAR SLIP	REIN-FORCED BAR SLIP	
UP THRU 12	26	NONE REQUIRED	1	26	26	24	24
13-18	24	NONE REQUIRED	1	24	24	24	24
19-30	24	1"x1"x1/8" @ 60 IN	1	-	24	24	24
31-42	22	1"x1"x1/8" @ 60 IN	1	-	-	22	22

(1) TRANSVERSE REINFORCING SIZE IS DETERMINED BY DIMENSION OF SIDE TO WHICH ANGLE IS APPLIED.

DUCT CONSTRUCTION DETAIL
NO SCALE

GRILLE AND REGISTER SCHEDULE									
SYM.	TYPE	SIZE	CFM RANGE	THROW PATTERN	CONSTR.	FINISH	BALANCING DAMPER	FIRE DAMPER	REMARKS
GD-1	CEILING	12x12	300-400	⊠	STEEL	WHITE	NO	NA	PRICE MODEL SMD IN 24x24 LAY-IN MODULE
GD-2	CEILING	9x9	150-250	⊠	STEEL	WHITE	NO	NA	PRICE MODEL SMD IN 24x24 LAY-IN MODULE
GD-3	CEILING	9x9	250	⊠	STEEL	WHITE	NO	NA	PRICE MODEL SMD IN 24x24 LAY-IN MODULE
GD-4	CEILING	6x6	50-150	⊠	STEEL	WHITE	NO	NA	PRICE MODEL SMD IN BEVELED FRAME
RG-1	CEILING	10x10	100-300	NA	STEEL	WHITE	NA	NA	PRICE MODEL 535 IN 24x24 LAY-IN MODULE
RG-2	CEILING	16x16	450-700	NA	STEEL	WHITE	NA	NA	PRICE MODEL 535 IN 24x24 LAY-IN MODULE
RG-3	CEILING	8x8	50-150	NA	STEEL	WHITE	NA	NA	PRICE MODEL 535 IN 24x24 LAY-IN MODULE

ELECTRIC HEATER SCHEDULE						
SYM.	TYPE	BTU	KW	CHAR.	CONTROL	REMARKS
EH 1	WALL MOUNTED	5118	1.5	240/60/1	INTEGRAL T-STAT	QMARK TYPE CRA2024-T2
EH 2	WALL MOUNTED	10000	3	240/60/1	INTEGRAL T-STAT	QMARK TYPE MUH03-21 WITH OPTIONAL CEILING MOUNT BRACKET.



LICENSED ARCHITECT AR-2650
MARLA R. MORGAN
STATE OF IDAHO



MARLA MORGAN, Architect
PH: 208.270.2244
E-MAIL: morganim@coableone.net

Owner: COREY & CINDY SMITH
Office Building Remodel
1790 Sabin Drive Ammon, ID 83406

SHEET CONTENTS
DETAILS AND SCHEDULES

PROFESSIONAL ENGINEER REGISTERED
5785 S. 200th St.
BOISE, IDAHO 83725
Dec 11, 2020

Engineered Systems Associates
1355 EAST CENTER
POCATELLO, IDAHO 83201
PHONE: (208) 233-0501
FAX: (208) 233-0529
EMAIL: esa@engsystems.com
ESA JOB NUMBER: 20081

REVISIONS	NO.	DATE	DESCRIPTION

SHEET NUMBER
MP-3 OF 3